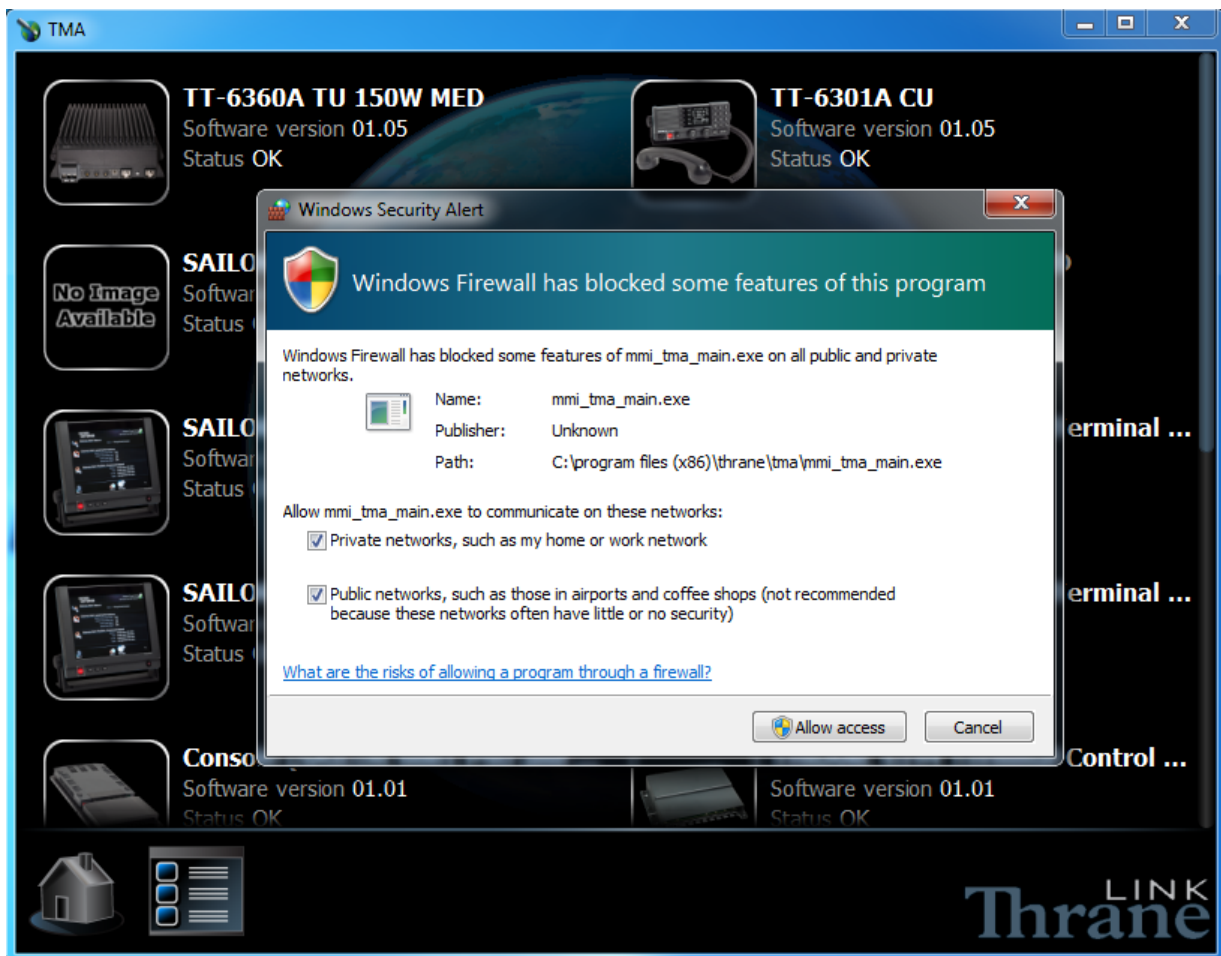


# ThraneLINK Management Application

## *Installation guide*

1. Unzip the TMA zip file and extract the content to a temporary folder.
2. Double click the file **TMA\_install\_win32.msi** to start the installation. Follow the setup wizard to finish the installation.
  1. Run the TMA application, e.g. from the shortcut on your desktop.  
If a Windows Security Alert pops up, check both the check boxes and click **Allow access** (Windows 7).

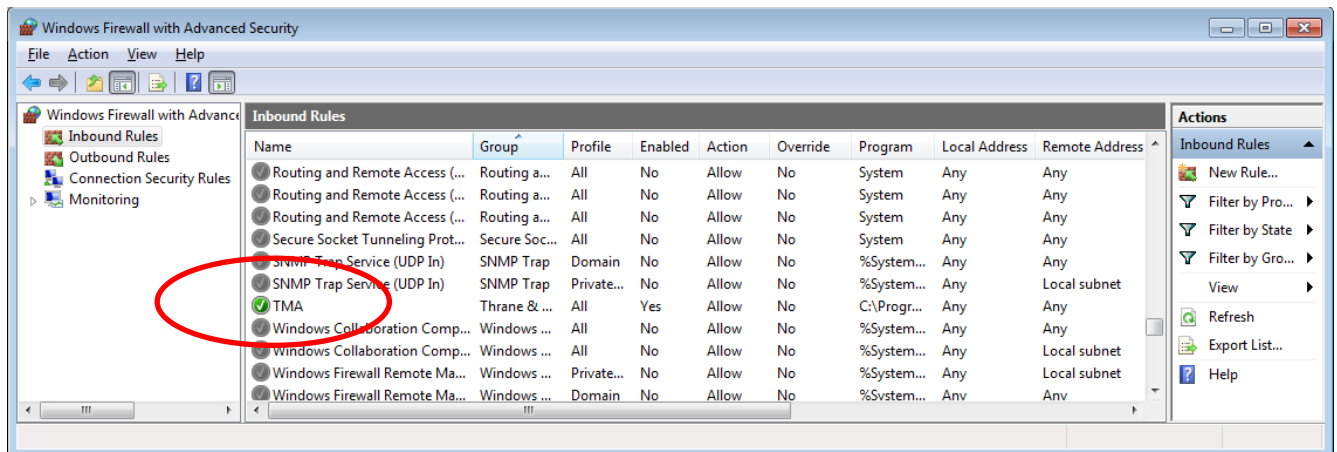


### Notes:

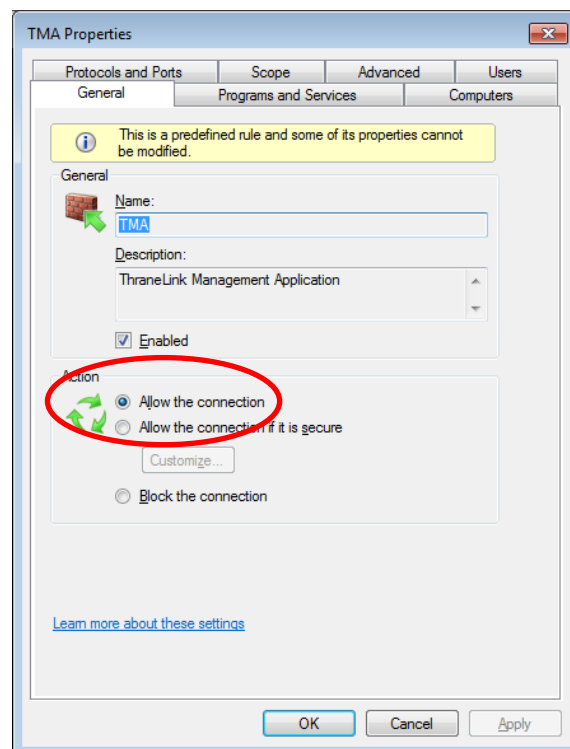
For Windows 7 users, if there are problems with functions like software upload and diagnostic report download, try the following:

1. Go to **Control Panel\System and Security\Windows Firewall**.
2. Click **Advanced settings** on the left.
3. Select **Inbound Rules**.

4. Check if there is a green check mark in front of **TMA** for all instances (private and public connections):



5. If not, double-click on **TMA**, and select **Allow the connection** in the **Action** field as shown:



6. Repeat the procedure for **Outbound rules**.

- MIB files are placed in **C:\ProgramData\Thrane\TMA\mibs** for Windows 7 users. It is important that all mandatory MIB dependencies such as **SNMPv2-CONF.txt**, **SNMPv2-SMI.txt** and **SNMPv2-TC.txt** are located here as well.
- If the same device is shown several times when running the TMA, uninstall all previous versions of the ThraneLink Management Application from **Control panel > Programs > Uninstall a program** (Windows 7). When all versions are uninstalled, re-install the latest version of the TMA.